

INVOLVE
EVOLVE
RESOLVE

ARRIS
ARCHITECTS

ARRIS ARCHITECTS

OUR STORY

We specialize in creating Experiences.... Creating larger than life experiences! Designing public Buildings, copious in scale and volume, at the same time giving importance to interiors and its allied elements, makes the approach more sensitive and program conscious . Balancing complex parameters and always evolving a step better each time, Arris has set itself high standards of conviction and self satisfaction. Design involvement is of paramount importance for a seamless transition of ideas into technology and technology into reality. To evolve over and above the brief by always re- inventing the space in terms of material, attributes and concept of design derivation. Using Progressive soft wares as medium to enhance probabilities of the upshot but relying more on intuitions and experience. This sums up Arris Architectural Practise into Involve Evolve and Resolve medium and method strategy.

It's philosophy is built on the dual concepts of client service and design excellence. Aspect of energy efficiency forms an integral part of the design process and is reflected in the company's commitment to incorporate advanced simulation tools to predict the performance of the proposal at the conceptual design stages.

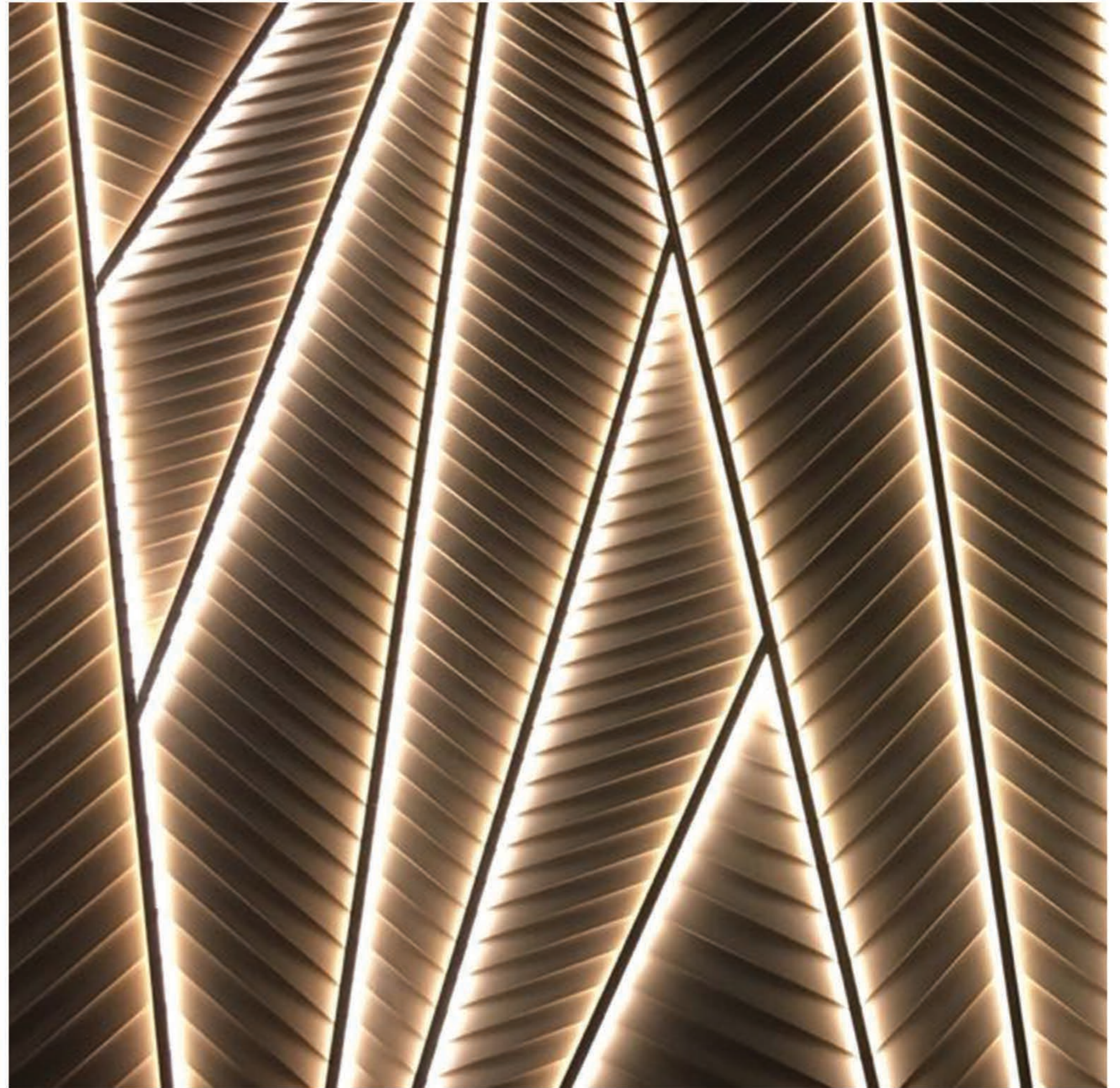


OUR PHILOSOPHY

Our Team begins every project with a detailed discovery process to ensure that we fully understand your Project wants, needs and desires. We listen to the customer—their wishes, expressed needs, and aspirations—and try to satisfy their innermost hopes and passions.

Arris Design Studio coordinates as an architect, interior designer, system integrator, mechanical and electrical to gather necessary construction plans. In short, we take feelings expressed by the client, turn them into design ideas, and finally translate them into machine instructions that shape the final product. For that process to work smoothly one needs a perfect combination of free-flowing creativity and disciplined engineering practice.

It's philosophy is built on the dual concepts of client service and design excellence. Aspect of energy efficiency forms an integral part of the design process and is reflected in the company's commitment to incorporate advanced simulation tools to predict the performance of the proposal at the conceptual design stages.

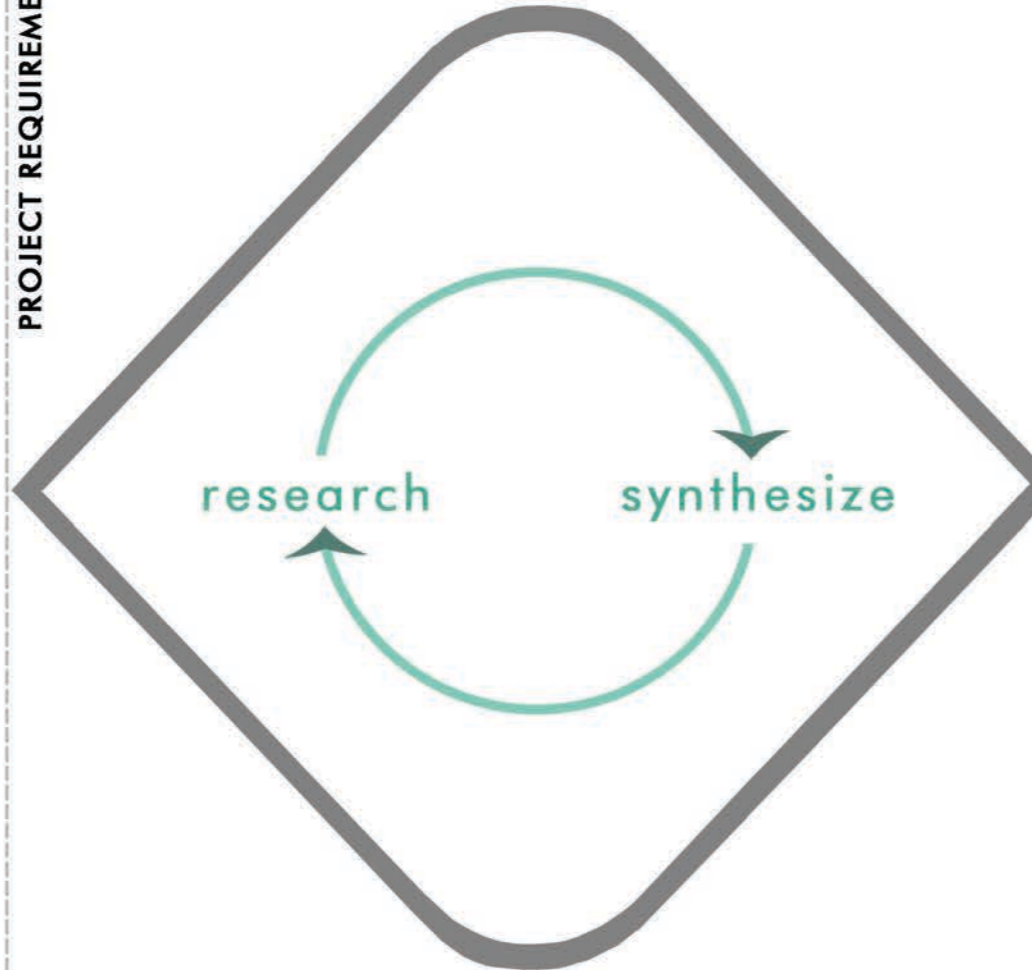


OUR PROCESS

DISCOVER

INSIGHT TO THE PROJECT

PROJECT REQUIREMENT



- Market & User Research
- Design Research
- Technology research
- Interviews & Insights
- Budget analysis
- Observation from As-built drawings
- Approval of Design Program

DEFINE

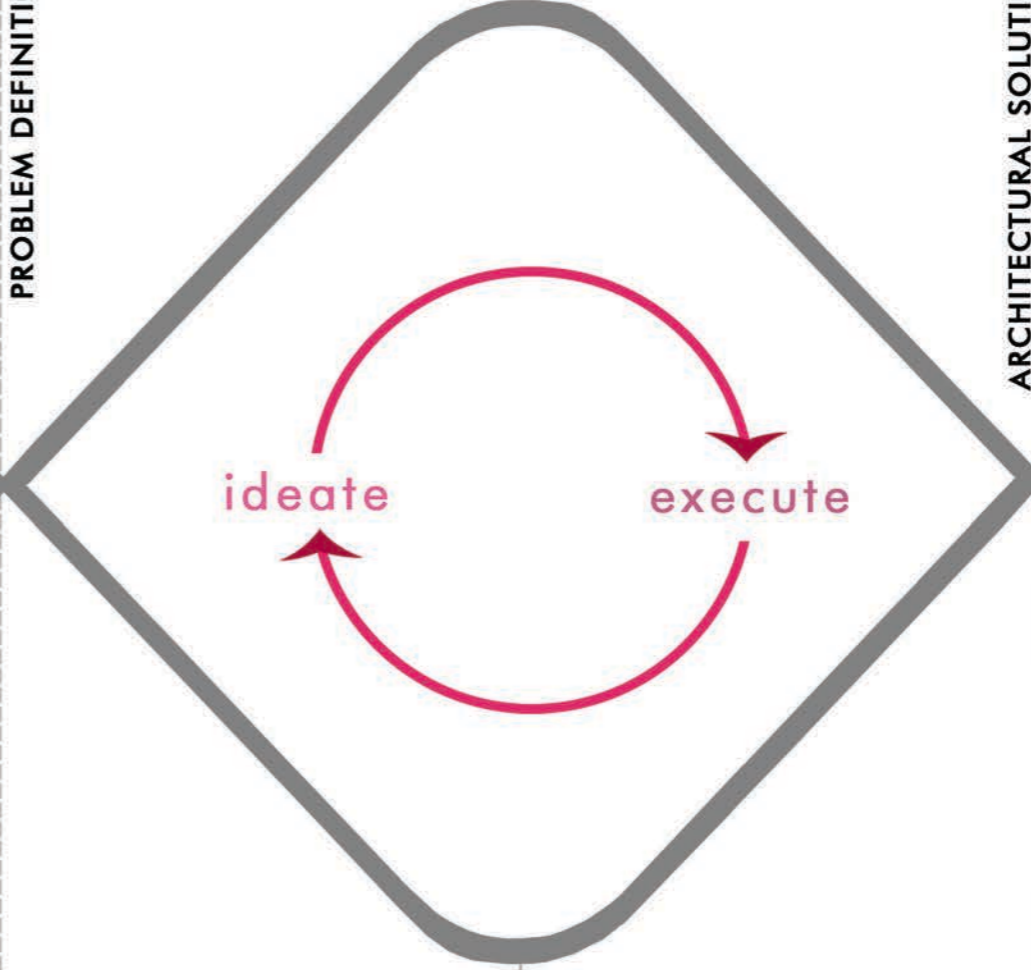
INTERPRETATIONS AND FINDINGS TO PROJECT OBJECTIVES

- Information Analysis
- 3d massing
- Synthesis & Identification
- Contractor recommendation
- Project refinement with Preliminary cost estimate
- Project Management
- Project Sign-off with Conceptual Images

DEVELOP

DESIGN CONCEPTS ITERATIONS & ASSESSMENT

PROBLEM DEFINITION



- 3d Model of complete project
- Multi Disciplinary coordination with drawings from consultants
- Material Palette with cost revisions
- Mock ups & Prototyping
- Review & Improvement and approval from Client

DELIVER

PROCESS OUTCOMES FINALISED & IMPLEMENTED

ARCHITECTURAL SOLUTION

- Final details with hardware, lighting accessory
- Execution as per Shop drawings
- Fabricators and Contractor coordination
- Site visits for additional details and revisions
- Launch of Project Evaluation and Feedback

OUR WORK CULTURE & FABRICATION

Arris Design Studio is built up on strong values of boldness , honesty , trust, commitment alongwith passion and fun. Our innovation team bridges the gap between imagination and presentation by creatively fusing knowledge base with technology.

We thus stand out well above the rest for our Innovative thinking.

DESIGN



RESEARCH



FABRICATION

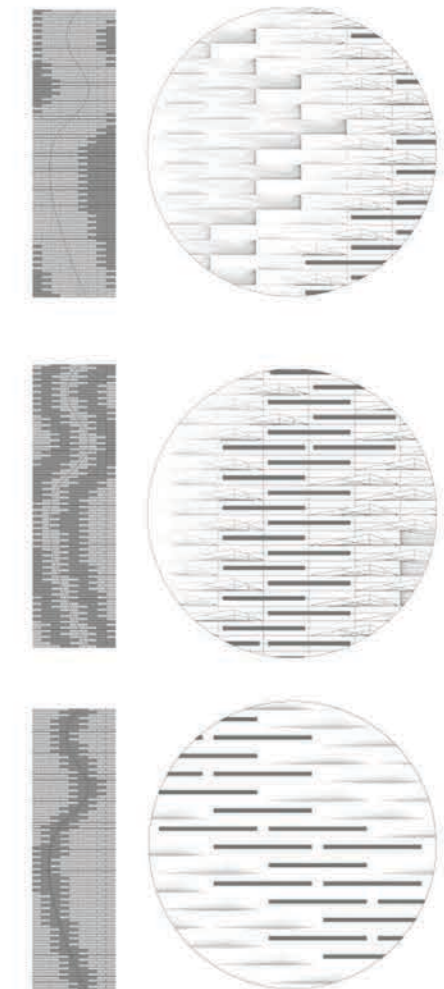
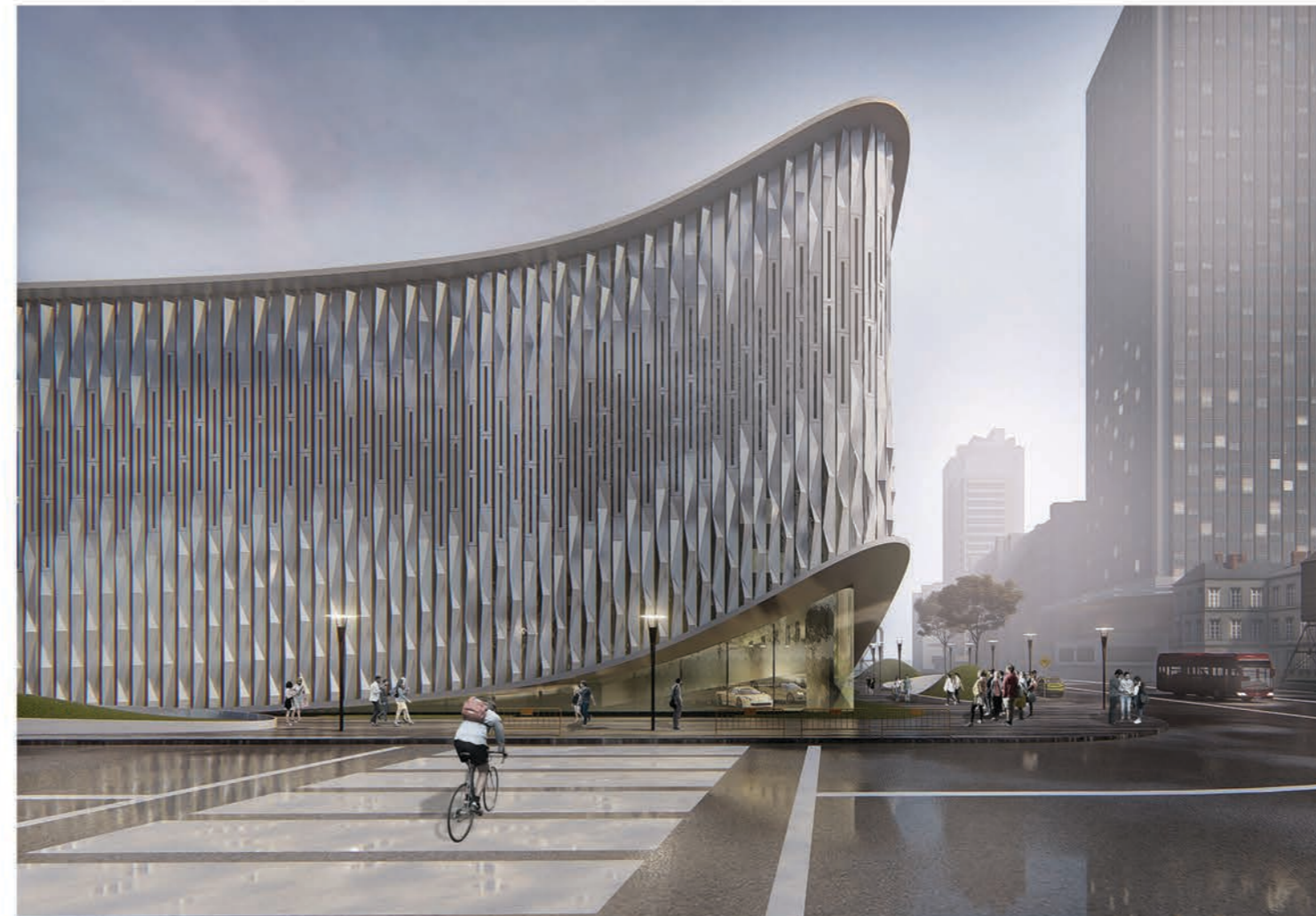
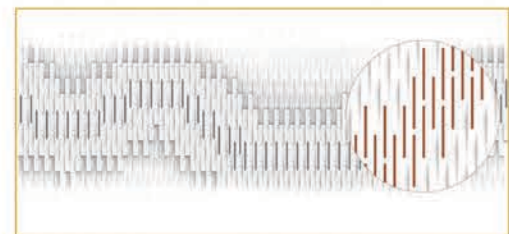
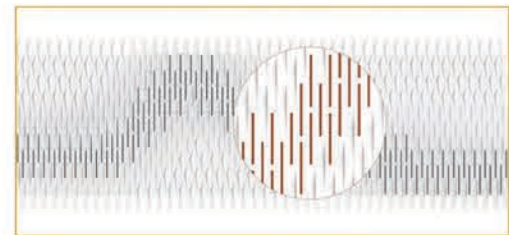
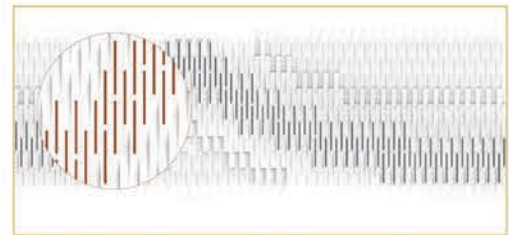
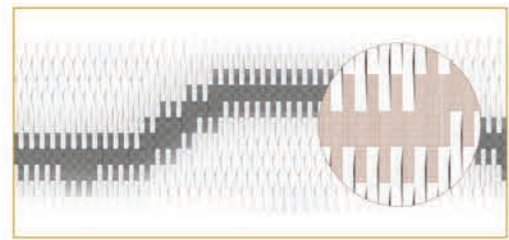


MATERIALS

COMPUTATIONAL DESIGN

Computational design is the application of computational strategies to the design process. While designers traditionally rely on intuition and experience to problem solving, computational design aims to enhance that process by encoding design decisions using a computer language.

We aim to use these computational tools to enhance design solutions and for a more flexible workflow to maximise outputs and design possibilities.



OUR WORK SPACE

A PLACE WHERE CREATIVITY AND INNOVATION MEET

In line with our "INVOLVE+EVOLVE +RESOLVE" philosophy, we support collaboration amongst all our different teams of Architects, Interior Designers and Graphic Illustrators. With stunning modern Interiors set against a jagged mountain backdrop, our studio is as diverse as its surrounding landscape. Our Open office Studio has been designed in all its aspects to promote idea-sharing and experience implementation in a smart and friendly work environment where thoughts, creative production, analysis and cross collaboration merge. This buzzing sharing of ideas is the right environment for design to spring and flourish. The discrete arrangement of the space and circulation allows for different configurations of the studio in order to fit any team or project size.



CLIENTS

Glitz Cinemas
Inox Movies
Cinepolis
Fun Cinemas
Blockbuster Cinemas
Essel Group
E- City Ventures
Essel Propack
Essel World
Cine Grand
PVR cinemas
G:Corp
Hubtown
TCS
Sri Sakti Cinemas
Rajhans
Elpro Estates
Growel Grauer & Weil
Global Indian Int. School
Delhi Public School
Suncity IB School
KGT international School
Elpro Internation School
Credo World School

PROJECT TYPES

COMMERCIAL &
RETAIL

MULTIPLEXES & EN-
TERTAINMENT

CORPORATE
OFFICES

RESIDENTIAL

INSTITUTIONAL

SERVICE OFFERINGS

A gist of subject matter expertise offered by arris and its panel of experts in the field of architecture, interiors and cinema designers.

ARCHITECTURE: DESIGN & PLANNING

Over 130 projects since its inception and counting, makes a huge statement about the knowledge base and experience gained in design and execution. The experience is carried forward as improvisations into future projects to better the final outcome. Arris has designed commercial, mixed-use, high end residences, individual bungalow schemes & few town planning proposals.

THEATRE CONSULTANCY

Our services as part of the feasibility study stage includes evaluation of existing facilities, providing budgets, deciding on a program and assisting with site selection and design team integration. We also ensure that the complex issues of aesthetics, acoustics, technology and functionality are combined in creative design. We determine theater capacity, whether the requirement fits into existing structural grid etc.

INTERIORS: LAYOUT & STYLING

Preparing proposal layouts for over 150 cinema screens, large offices , school buildings with plush interiors with functionality. Modern materials, fast and skilled workmanship and supervised execution results in the authentic ensemble of design compositions, applauded by national & international publications.

MEP, STRUCTURE & PROJECT MANAGEMENT SERVICES

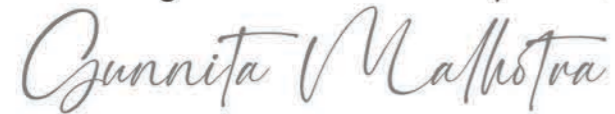
Implementing leading software and updated versions of latest technologies like Autocad, Revit, Sketch up with V-ray, Rhinoceros, Grasshopper, 3DS Max, etc. Arris has trained individuals which use BIM Technology to arrive at a solution maintaining a systematic repository of drawings and schedule its release with regular updates.

TESTIMONIALS

"Prerogatives for design elements are at par"

Beyond the conventional to create indulging environments for a design program, has become a relentless habit of Arris Architects! & this is what appeals to me most. Their prerogatives for design elements are at par with material trends and innovative learning initiatives by KGT, International. Best calculus are student enrichment and their guardian satisfaction, which proves it. Their designs and our methods are together paving a way for much needed paradigm shift, in the education spectrum.

Wishing Arris All the very Best!



Trustee & Mentor - KGT International School, Worli

"It has been a pleasure to work with them"

GLITZ Cinemas Jodhpur is our third project with Arris Architects. Their ability to integrate local designs / architecture into the cinema design is a unique approach that very few architects are willing to take. The sheer experience of designing number of cinemas across India gives them comprehensive knowledge of local laws / workmanship issues and the attention to detail drawings save time and cost for us. It has been a pleasure to work with them Wishing Arris All the very Best!



CEO Glitz Cinemas

"Your design has helped contribute to the success of both our malls"

The approach of a coordinated effort between your team and our company has always helped achieve a noteworthy design. The resounding testimony to the successful design is that both the malls have been 100% occupied even during the severe global recession. Needless to say, our operators have also appreciated the ease with which they are able to coordinate with your franchise to accommodate their customized requests. I am confident that we shall be able to strengthen both our efforts in times to come. Good Luck!



Managing Director - E-City Ventures, Essel Group

"We think Arris Architects created a visually appealing yet functional building keeping in mind the flexibility feature of an educational institute"

"Working with Arris architects is a pleasure. They balance the architectural vision and the project realities beautifully, have a deep understanding of our priorities, and operates responsively and professionally to all matters. Their motto of involve evolve and solve led to a beautiful, practical, and successful start to our institute."



Pro-Vice Chairman DPS Panvel,
Chairman, Credo Schools

"Their systematic emphasis on research, collaboration, modeling, rendered outputs further into built forms and critical evaluation is ideal and I can only applaud its broader adaptation into the business world."

Our association with Arris Architects goes back to more than a decade. They have designed more than 200 screens for INOX and have helped us redefine the cinema viewing experience in the country. With the Cinema design background that they possess, they understand our priorities and balance the luxury quotient and project realities gracefully. They build cinema architecture of idea, attitude and context beyond just form, space and structure. They have created a real shift in visually glamorous yet functional cinema theaters and lobbies keeping in mind the features of every city with progressive design forms and flexibility.

INOX Movie theaters, concessions and lobbies designed by team Arris have added immense value to our brand and it has been a pleasure working with them.



CEO, INOX Movies

ACCOLADES & PUBLICATIONS

Our design practice has served all over the country

The publication of couple of our works with 60 contemporary cinema spaces all over the world in the book Cinema Architecture is an appreciation of such a dedicated service.

Magazines



NDTV Design Architect of the year, 2014
NDTV Design Architect of the year, 2015
Design All, 2016
I-GEN Forum, IGEN 50, 2013
Big Cine expo, 2013

Awards



RESIDENTIAL

THE BUNGALOWS, AHMEDABAD

The Bungalows is a first of its kind luxury housing project near Satellite Rd, Ahmedabad, the hub of all commercial and residential development. It establishes a unique identity by altering the genre of residential housing. The brief commissioned a programme based on the adaptation of 'luxurious living' in the contemporary context. Re-inventing the traditional housing morphology, the intent was to create 'bungalows in the sky' with sufficient open space in the form of terraces for each apartment in order to craft a three-dimensional urban environment. The luxury and opulence associated with quintessential bungalow living are recreated with the help of double-heightened free-flowing spaces, articulated terraces, private lift lobbies and panoramic views. Besides the residential towers, multiple recreational facilities have been provided, including a clubhouse with Squash Courts, Mini Theatres, Private Decks featuring an all-weather pool. The high-performance façade is a fully unitized system that is wind and water proof, incorporates daylighting, solar heat gain control, ventilation and space conditioning whilst catering to much-needed structural stability in a high-risk seismic zone. "Bungalows" attempts to create an identity, to give each family a villa in the sky, large outdoor spaces with no visual intrusion and a unique individual sense of entry.



The Bungalows

RESIDENTIAL

PRIVATE RESIDENCE, HAZARIBAUGH

Project Name: NCL bungalows

Typology: Residential/ Row-houses/ Independent Bungalow

Location: Nitin compound, Thane.

Year of completion: Under construction

Juxtaposed against a densely cramped urban context with high-rises on three sides, and an old defunct factory on the other, within the heart of Thane city, lie the NCL Bungalows, home to the famous, oldest industrial precinct area – The Nitin Casting.

Taking cognizance of the context and its location in a resource conscious, shared city-living within a compact footprint, the brief here was to design 3 bungalows for a developer to sell off to individual clientele, the design being driven by what could be made the most of the site.

The predominant factors to be encircled here were those of privacy and identity. Identity-catering to an audience who were to own a bungalow rather than an apartment amidst the hustle bustle of the city. Whilst, typically bungalows are for a single owner, the NCL bungalows lay midway in a spectrum with an apartment and a single-owner bungalow being the extreme end.



RESIDENTIAL

NCL BUNGALOWS, THANE.

Project Name: NCL bungalows

Typology: Residential/ Row-houses/ Independent Bungalow

Location: Nitin compound, Thane.

Year of completion: Under construction

Juxtaposed against a densely cramped urban context with high-rises on three sides, and an old defunct factory on the other, within the heart of Thane city, lie the NCL Bungalows, home to the famous, oldest industrial precinct area – The Nitin Casting.

Taking cognizance of the context and its location in a resource conscious, shared city-living within a compact footprint, the brief here was to design 3 bungalows for a developer to sell off to individual clientele, the design being driven by what could be made the most of the site.

The predominant factors to be encircled here were those of privacy and identity. Identity-catering to an audience who were to own a bungalow rather than an apartment amidst the hustle bustle of the city. Whilst, typically bungalows are for a single owner, the NCL bungalows lay midway in a spectrum with an apartment and a single-owner bungalow being the extreme end.



INSTITUTIONAL

CREDO WORLD SCHOOL, DAHANU.

Project Name : Credo World School

Typology : Educational architecture

Location : Dahanu

Status : Ongoing in Phases (Since 2016)

Approximate Project Size: 1, 35,000 sq. ft.

Approximate Construction Value : Rs.200 million

Program : Primary school and Secondary school

Themes: Tight plot land, Light wells and Wind tunnels for ventilation, Climate responsive.

Situated on a tight plot land with an area of 3 acres only in the city of Dahanu, the challenge here was to attain the kind of density without compromising on the light and ventilation filtering into each classroom.

Light wells have been constructed and the South-west winds have been channeled to ensure circulation, creating a sense of vibrancy and breeziness within the school complex, negating any gray gloomy spaces.

In an age of air-conditioned schools becoming increasingly popular, we have attempted an energy-efficient approach by effective harnessing of breezes and adequate natural light during the day.



INSTITUTIONAL

DELHI PUBLIC SCHOOL, HAZARIBAUGH.

Project Name: DPS Hazaribaugh

Location: Hazaribaugh

Typology: Educational architecture and interiors.

Area: B.U.A 1, 50,000 sq. ft. 8 acres of lush landscaped gardens. Comfortable green: concrete ratio of 4:1

Year of completion: Ongoing in Phases (Since 2014)

Approximate Construction Value: Rs.240 million

Program: Primary school and Secondary school

Themes: Affirmative, bold, Symmetric, focus on recreational space.

Set in the city of Hazaribagh in Jharkhand, amidst 8 acres of lush green landscape lays a franchise for a popular north Indian school chain called Delhi Public School. The serene and green natural surroundings provide a vibrant setting for an activity focused K-12 school. Commissioned by the M.P of the state, Mr. Manish Jaiswal, the massing of the form commands ORDER and DISCIPLINE.

The prominent form is instrumental in creating a powerful impression on the viewer at the very first glance. The lush greenspace creates the apt backdrop against the setting of the school forming the necessary dialogue of the green with the built mass. The students are always connected and have a vision of the outdoor spaces as they move all through their building.



INSTITUTIONAL

SUNCITY IB SCHOOL, NOIDA.

Location : Suncity, Gurgram

Typology : Educational architecture and interiors.

Status : Completed in 2019.

Approximate Project Size: 8525 sq.ft site area

Program : International Baccalaureate

Themes : Contemporary, Composition of cubes and green, compact structure.

Activating the Theory of Knowledge through space planning, the design strategy for this school draws inspiration from the IB program's Theory of Knowledge. Building a rather distinct language, on a compact footprint, eccentric to the IB board, set apart from the adjacent school block set in the same site formed the underlined premise for the design. To create a language that would synergize with the principles and ethos of the International standards of teaching. Thus, a theme of 'Corporate yet Playful' is the underlining basis for the design development. Inspiration came in to provide a design solution that reinforced a concept of 'international-mindedness.' A space to aid challenging yet balanced education that would facilitate geographic and cultural mobility.

Minimalistic interiors using only three colors – somber white and greys against a splash of bright yellow create the required playful character whilst maintaining the formal corporate environment required in a space that translates and encourages learning.



COMMERCIAL AND RETAIL

QUORUM MALL, RAIPUR.

Quorum Raipur
Aravali Projects
Status: complete 2014

The capital of Chhattisgarh Raipur has been in the throes of the fastest development ever seen in this part of the country since 2010. Since then there has been a demand for high quality commercial realty. It was a pre-requisite for Quorum, to be the parading shift that the region has been waiting for. An absolute superlative quality commercial realty on a strategic location for MNC's & Indian corporate-a Quorum promise.

Quorum is structure designed to become the very symbol for the city. An iconic design to represent state's entrepreneurial spirit was the program derivative. Following the avant-garde design philosophy the entire structure appears veiled in a luminous net giving it its identity. The lines flowing through as a melody in concrete. Every little detail is a part of a larger harmonious symphony. The design focus has been laid over the functionality of the structure. Space has been planned in accordance with the needs & requirements of modern business essentials.



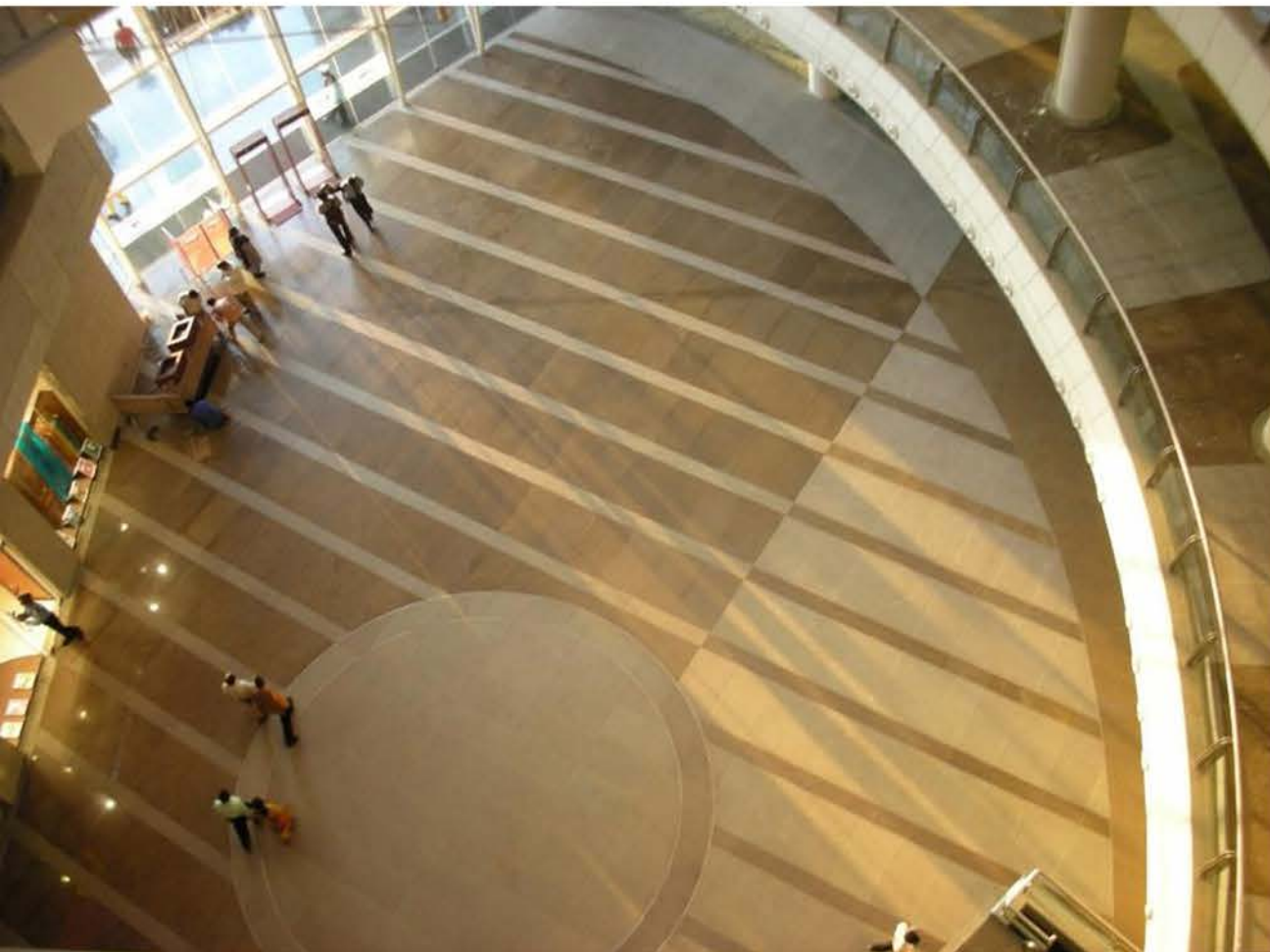
COMMERCIAL AND RETAIL

FUN REPUBLIC MALL, LUCKNOW.

Fun Republic Lucknow, India
E-City Projects
Status: complete 2007

Huge area coverage of about 3.5lac sq.ft, with 14 escalators and 1 traveller, the mall was spacious and lavishly big. The slope of the site was utilized to place Anchor tenants one at each end, to follow the dumbbell mall design. One entrance located at ground level and other at anchor tenant over the contour. It followed a very logical traffic pattern, convenient for both vehicle and people. The distribution of shops according to utility and area, was based on researched calculations by Arris to enhance mall economics and functionality. Apart from the mall financials and workability, long term ecological impacts of energy utilization and waste recovery was also considered. Apart from the site being Brown-Field site, waste water management and sewage treatment plants were part of the ecological footprint by the mall. Atrium day-lighting analysis and fabric roof implementation help reduce building HVAC loads.

This resulted in a well planned and extremely well executed public mall, with friendly proportions and adequate circulation mediums. Larger and long term interests were also safeguarded and futuristically provided for.



COMMERCIAL AND RETAIL

FUN REPUBLIC COIMBATORE, INDIA.

Architecture always draws references from its site surroundings. Coimbatore, is a part of south India predominantly famous for textile industry. Proximity to Madurai, makes it known for locally sourced stone. The design of the mall is underplayed with cost effective materials as opposed to originally proposed glass and stone, as the mall was caught up in the dull phase of the recession of 2008. Though the planning and circulation has been unaffected, the look-n-feel of the surface treatment of the mall suffered the most.

The opaque masses of the mall are expressed like stone boulders. Spaced with glass strips this got modified to painted walls due to lack of appropriate funds. Clarity of Expression is an USP for a mall to work well and that is a characteristic feature of all mall designs by Arris. Visual connectivity is achieved through simple straight forward lines of shop fronts and atrium edges. Arris has always been particular with mall economics and hence a detailed study of tenant types and their percentage of shop area were worked out, to achieve best results for the owner and the patrons, both. Their signature entrances, one at ground level and other directly at podium, both catering to anchor tenants, facilitate circulation and adequate footfalls to the mall. To avoid haphazard signanges, a central band inside the mall provides sellable signage space on all three sides.



MULTIPLEXES

INOX AT INORBIT MALL, MUMBAI.

Our aim was to improve the dynamics of the available space functionally & aesthetically. Island concession counter was shifted towards the end wall of concessions, reclaiming the central area patron movement, both physically & visually. F&B kiosks were shifted on either sides of the entrance which allowed extending & maximizing the visual depth of the entire space. All auditorium entrances were tilted at an angle towards the main entrance by introducing vertical planes on the said axes. This facilitated a clear identification of the same & clear sense of direction. Entire space was visualized as a single shell having different components. Lower height ceilings form visual lines that lead from one end of the space to another. Ceiling suspended drapes directly bind the space together to produce a flow of space. Central double height place is reserved as a patrons seating area giving them a feeling of being at the center of the activity. Its exclusivity is further enhanced by 21 and half feet in diameter and 6 ft in height custom made chandelier of suspended acrylic tubes with LED crystal lights. Analogous to movie making; the complete experience attempts to create a spatial drama with Fluidic lines and lights, textures and materials & the result is a one equally engaging , entertaining and enchanting spatial experience.



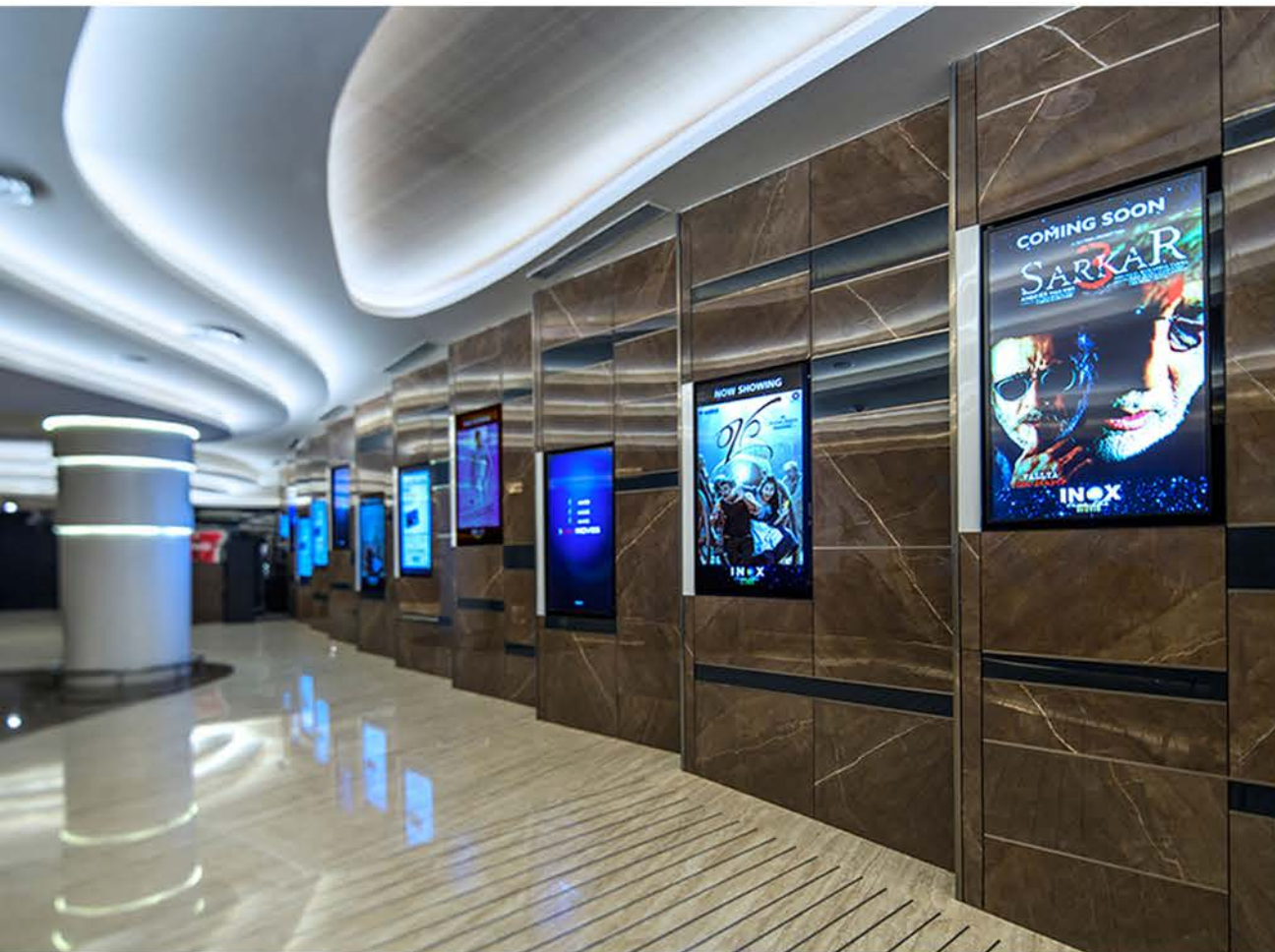
MULTIPLEXES

INOX AT MANTRI MALL, BANGALORE.

Placed in the heart of Bengaluru ; responding to the vivid imagination of the vibrant faction of cine-goers ; this place demands an experience that is class apart. Seamlessly flowing in from the common mall area , providing more than just a glimpse ; the lobby has become a head-turner.

For an urban context such as this, the design inspiration originated from unexpected places. Contoured tree plantations of Munnar and river flow patterns were abstracted to produce a binding line-work which holds the space together. A contoured ceiling helped to maximize ceiling heights rather organically, ceiling coves flow freely as if from infinity. At the same time river-delta like islands are created forming the seating/chandelier enclosures; which are then embellished by state of the art chandeliers creating invisible zones in an infinitely flowing landscape. Pebble-shaped playful seating placed in these zones create almost a dreamy experience.

Carefully crafted material palette of rich textures and surfaces enhance the luxurious experience further. Array of digital displays keeps the space constantly in motion and adding a cinematic experience right from the entrance. Constantly thriving to serve the customers better , this is a space that will carve out a niche for itself in the cine-goers hearts.



MULTIPLEXES

INOX AT R-CITY MALL, MUMBAI.

The lobby was designed for the intriguing minds of patrons with each area presenting a different cinematographic experience. The moment one step out of the escalator at the cinema level, the dynamic Led Display architrave at the entrance instantly lures you in and elevates the excitement level. The expansive Entrance foyer comprising of the café, Ticketing concierge, frisking offers generous views and intrigues the passer-by. The interiors is primarily black so that the experience is soothing and the design elements comes into its prominence. The bold accentuating curve lines on the black floor and the shimmering metallic ceiling ribbons further drags you down into the lobby. The Huge LED Screen towards the end of the curve screens a range of animations from film extracts to stills in away illuminating the entire foyer with the diffuse colours of the animated images. The undulating timber wall and ceiling envelop the visitors of the café and the gaming area, creating a warm and inviting atmosphere. Spanning the length of the volume, the crystal glass LED rings light installation along with the dangling Plexiglas panels in the ticketing area engages the viewer and establish a dynamic and dramatic atmosphere. The discreet and directional lighting along with the lit sunset toned alabaster underlines the important elements. Product of sales, displays and Cinema entries. Fun and coloured themed spaces with soft seating's and play tools specially dedicated for kids adds to the overall experience.



COMPETITIONS

SENEGAL PRIMARY SCHOOL.

HANDS OF THOUGHT

A manifesto investing in the people and community to learn and grow, where the people act as the architects themselves. The design aims to enhance a construction technique already familiar to the locals, taking it a notch above by creating a hybrid between a known technique with a new. The idea is to create guidelines of building systems, that can be interpreted and applied to build their own houses, rather than mere replication of modularity. A grid-line of pinned columns with a combination of infill walls are used to enable flexible spaces. "Many in body, one in soul", forms the crux of the école with an intention to create an end product that belongs to everyone.

Based on the Joule-Thomson effect of thermodynamics, customized clay bricks have been proposed, with half cut plastic bottles to form an Eco-cooler clay block. Hot air entering each block is compressed around the neck of the bottle, the rapid expansion of which cools it down before entering the classrooms. The bottle is removed once the blocks have been sun-dried. These blocks, placed in the direction of the prevailing winds can significantly improve the thermal comfort within. 1:1 scaled mock-ups were made to understand the hands-on capacity of its execution.



COMPETITIONS

SAI BABA TEMPLE DESIGN.

Traditionally, a temple is an elucidation of a built mass that encapsulates a belief, a hope for mankind. However in progressive times, a shift in the paradigm of our building typologies has been observed where we now look at buildings as more performative beings that perform in synergy with nature, nurturing the future of humanity. Have our beliefs thus changed in recent times and could we rethink this building typology as well? Since times untold, temples have been perceived as opulent building forms with enormous investments needed to maintain and clean these 'icons.' Thus could a formula be derived where the building itself grows with time with the lack of an external diligence? Since Sai baba preached values of love, forgiveness, acceptance, there arises a need to look beyond marble-clad buildings with enormous gold carvings and fancy forms and look at the walls and spaces as performative, living, interactive beings.




Arris Design Studio

W, 711-712 Opal Square, SG Barve Rd, Marg, Wagle
Industrial Estate, Thane West, Thane, Maharashtra
400604

website : www.arris-architects.com

contact : arrisarch@gmail.com

tel : +91-2225390629 +91-22-25433985

 [arrisarchitects](https://www.instagram.com/arrisarchitects)